

SUSTAINABLE LEATHER®
DANI



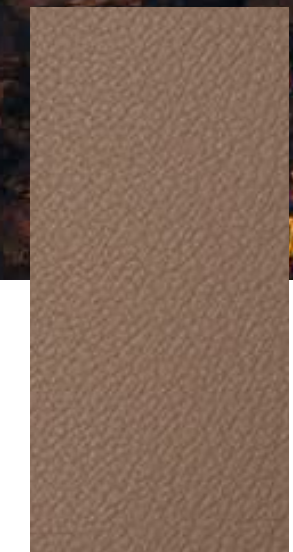
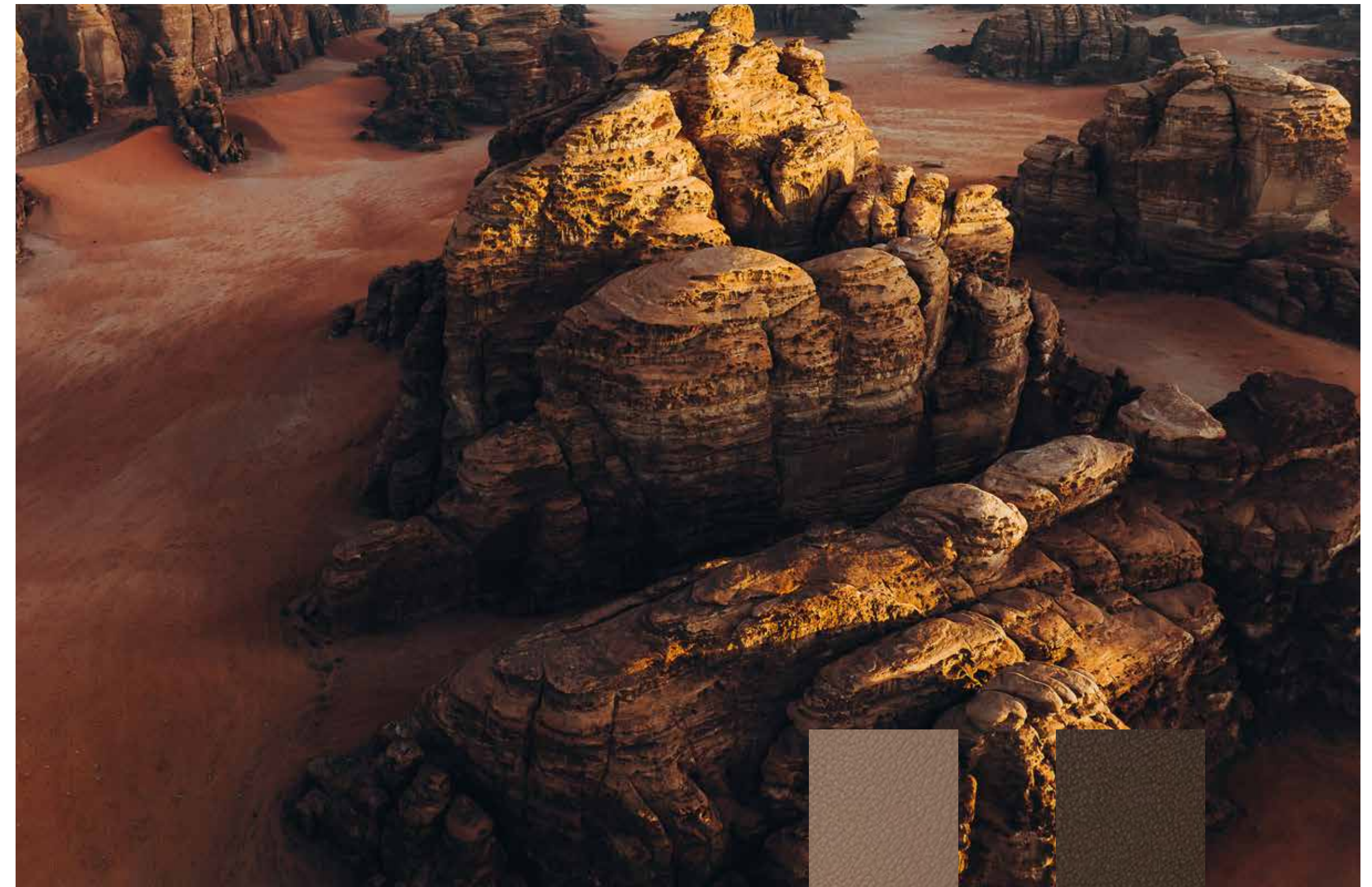
Cashmere *collection*



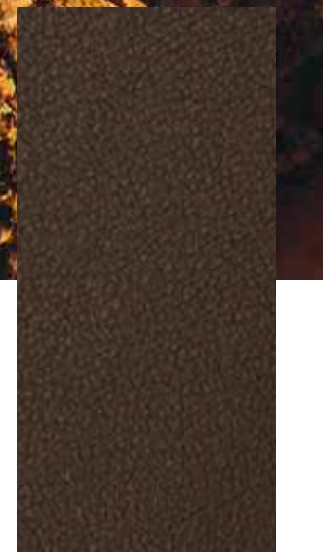
Cuoio



Ferro



Sabbia



Taupe

The special processing of this article exalts the surface of the leather, making it shiny and transparent. With a soft, full, round touch. Cashmere is a versatile article that adapts itself to various applications.



Nero

Available colors range



Sabbia



Biscotto



Cuoio



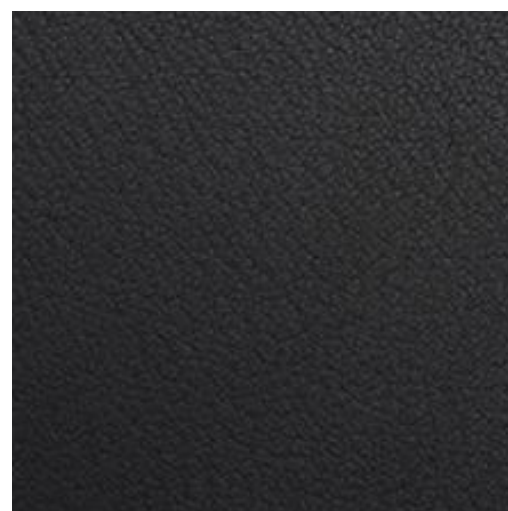
Taupe



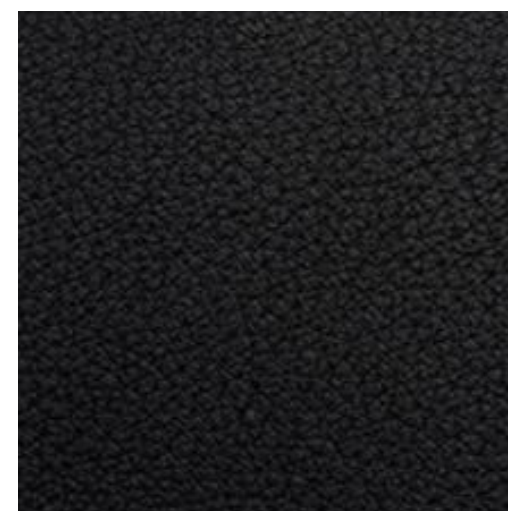
Castagna



Ebano



Ferro



Nero

Cashmere

Application: Leather goods, smart devices, furniture & contract, footwear

Thickness: 1.4 - 1.6 mm

Leather size: Full

Colors : 9 colors available

Typology: Pigmented, corrected grain, through dyeing aniline

Tanning: Chromium salts

Features: Performance leather

