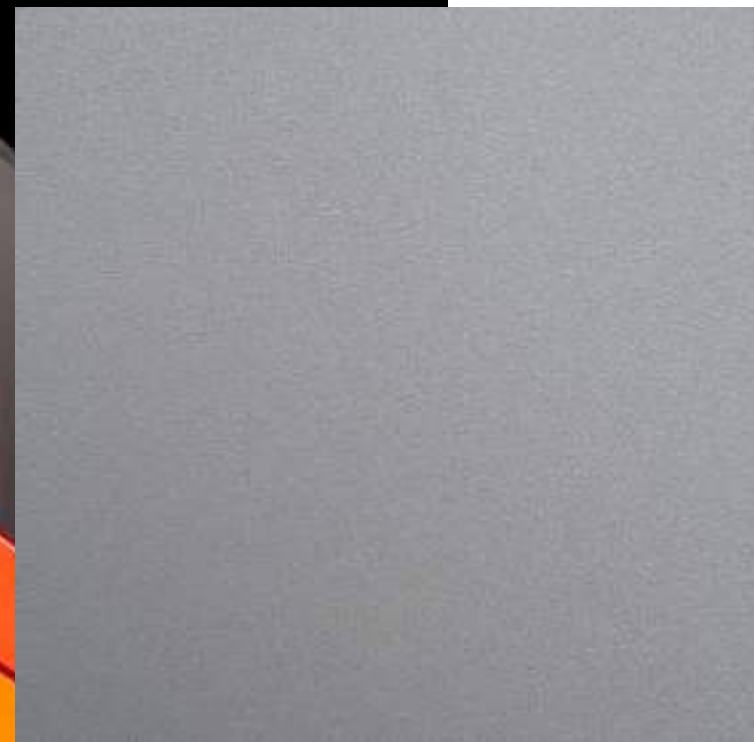


SUSTAINABLE LEATHER®  
**DANI**



**Nausica**

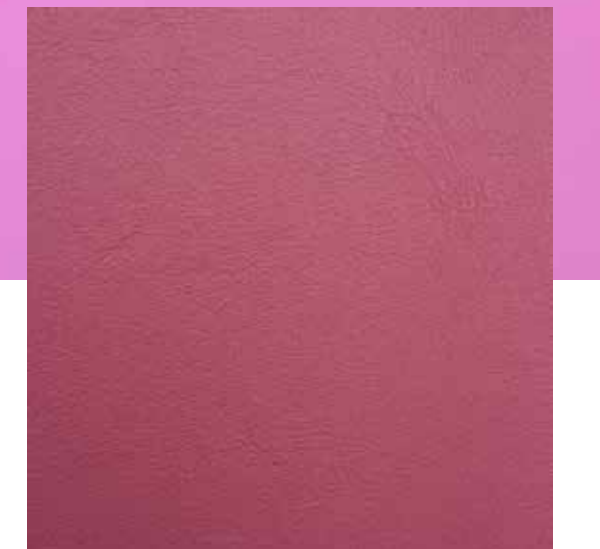
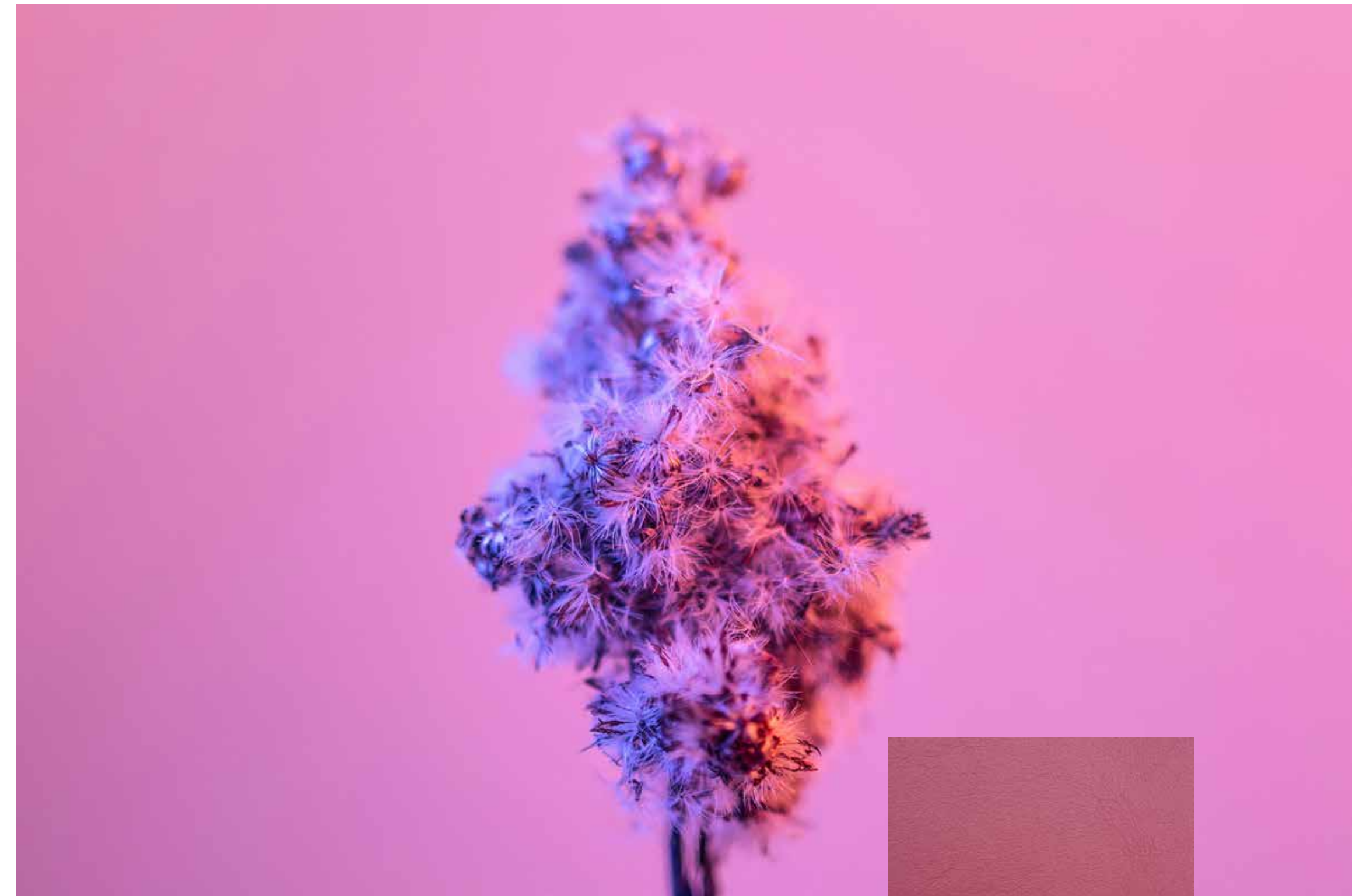
*collection*



Glacier



Fuoco



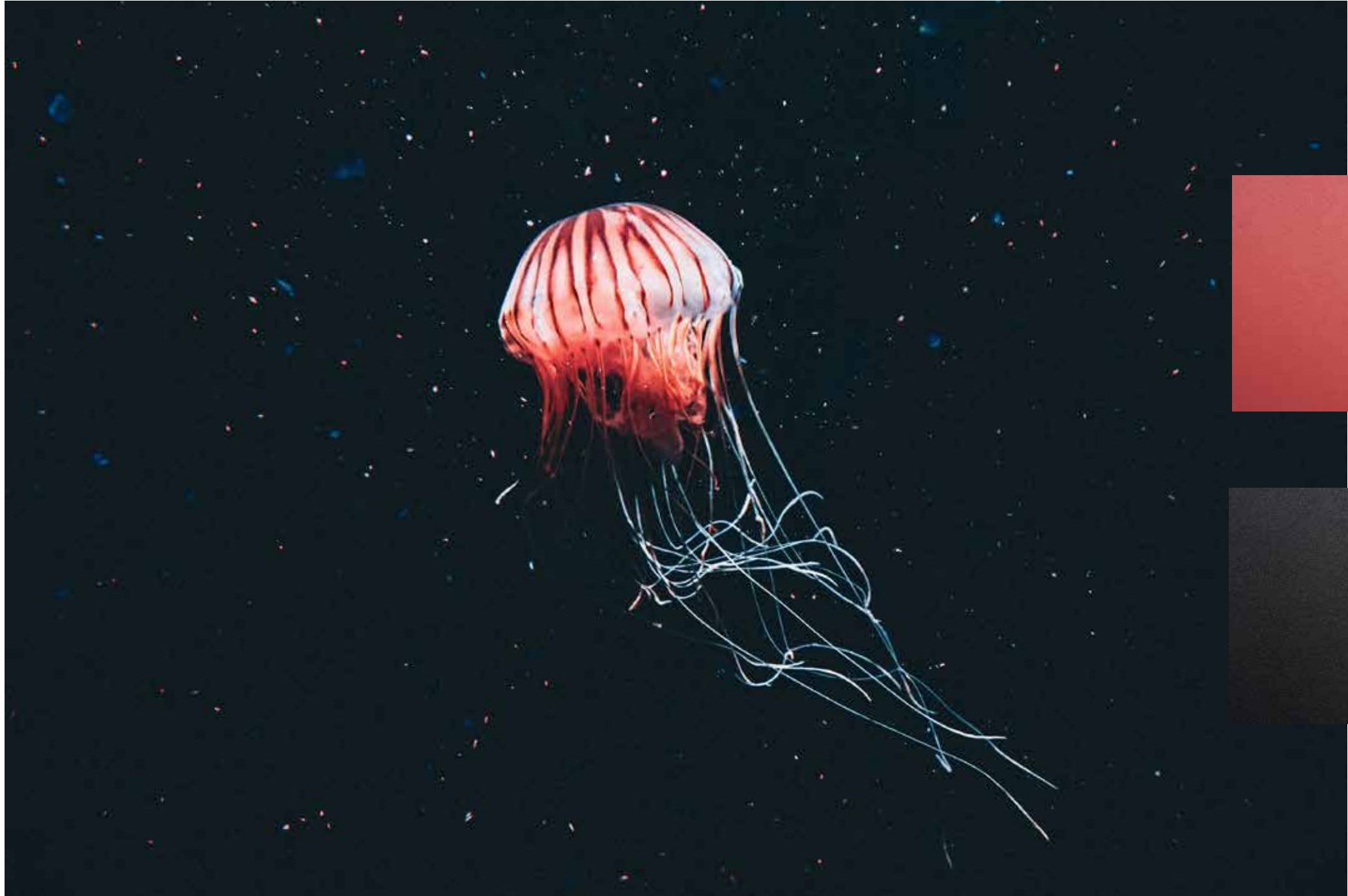
Pink

Elegant and timeless: Nausica is ideal for those in search of a modern and, at the same time, classic leather. Its special finishing enhances its brightness and transparency.



Baby blue

Lagoon



Corallo



Black

Saddle

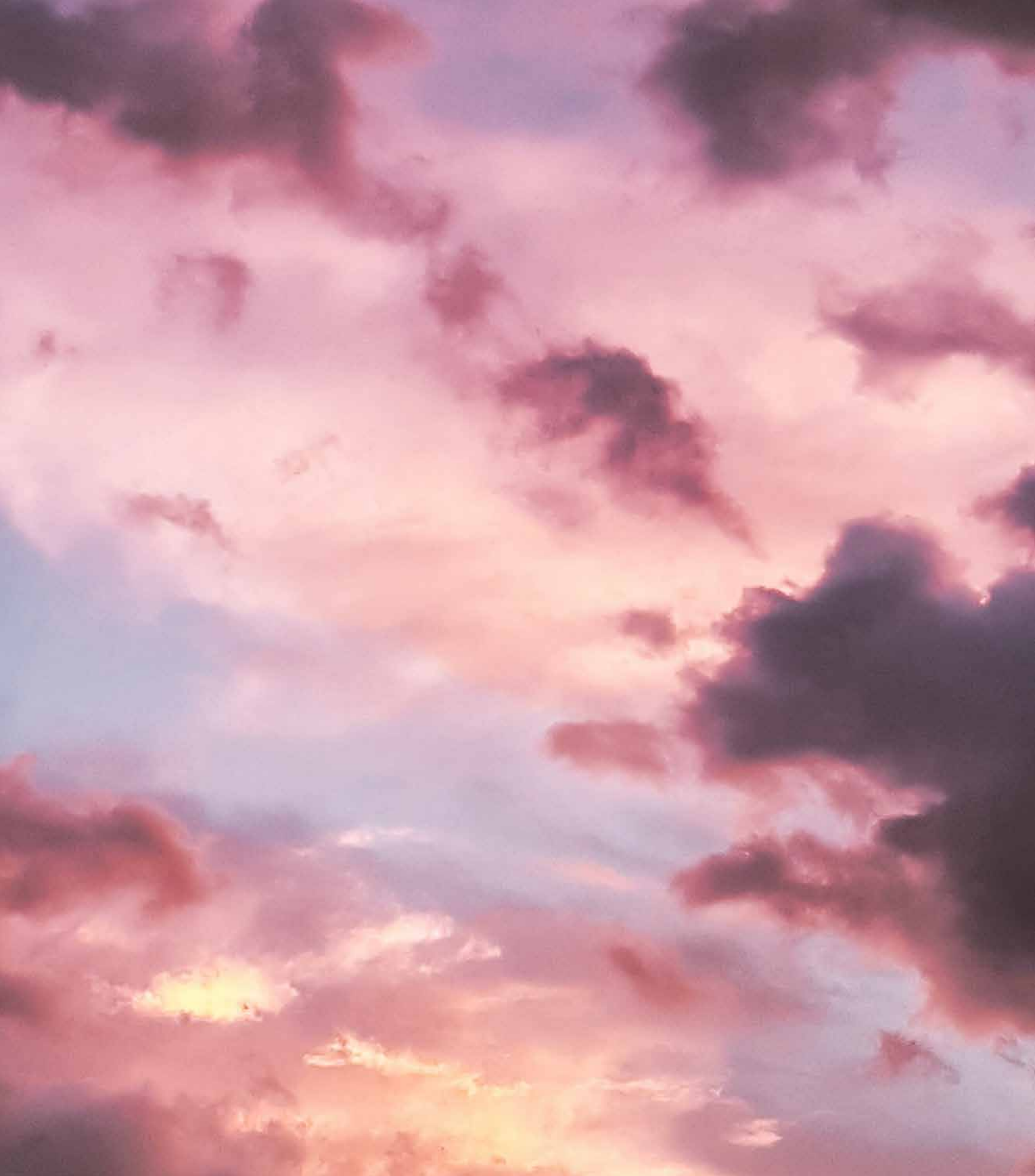


Golden Glow

Burro



Aloe



Breast



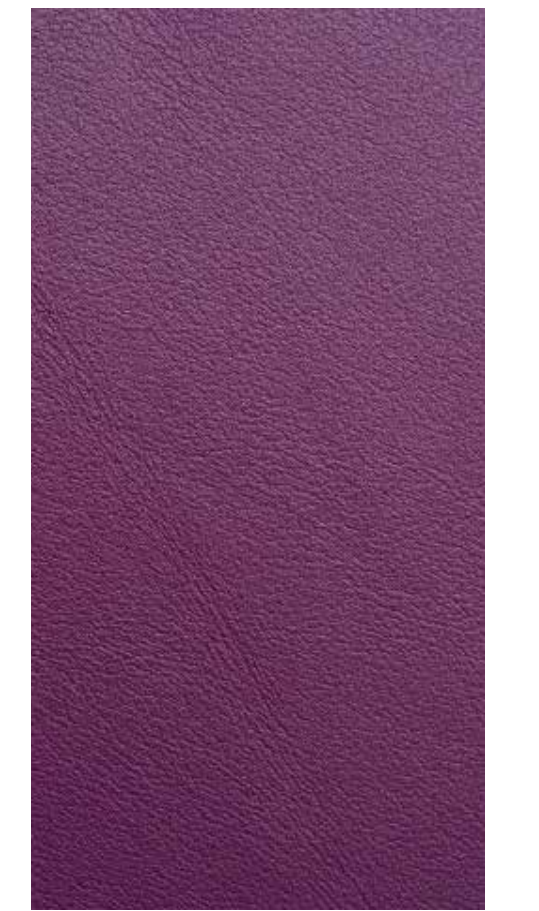
Passion



Figure



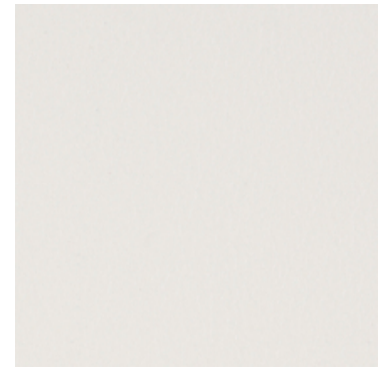
Orchidea



# Available colours range



White



Burro



Off white



Ivory



Giunco



Gerbera



Sole



Propolis



Granita



Orange



Fuoco



Mesa



Red cherry



Red wine



Rose



Cipria



Nudo



Breast



Corallo



Pink



Mosto



Passion



Figure



Glicine



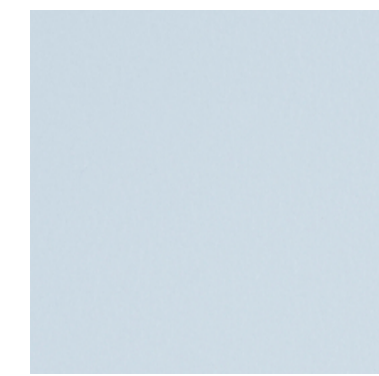
Violet



Orchidea



Dark grapes



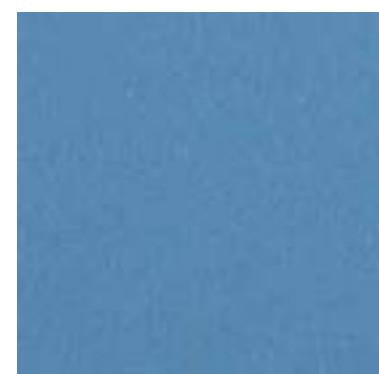
Baby blue



Artik



Myosotis



Butterfly



Lagoon



Royal blue



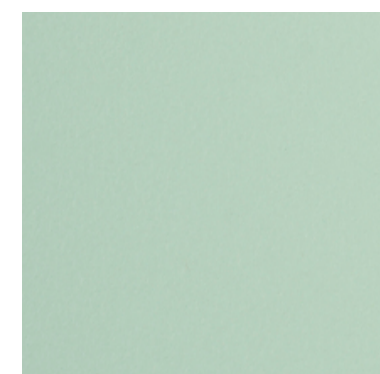
Pilote



Night blue



Cactus



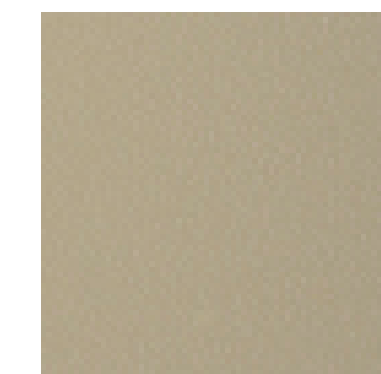
Quarzo



Menta



Agata



Jungle



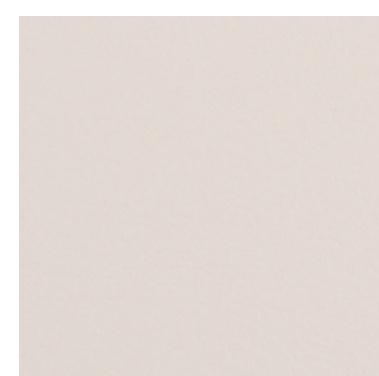
Aloe



Yorkshire



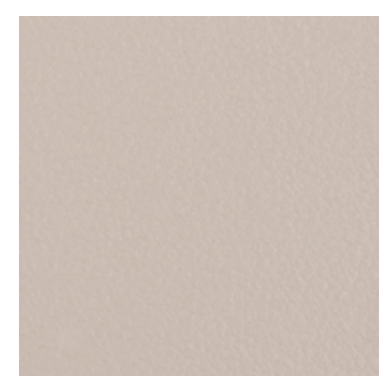
Kaki



Torrone



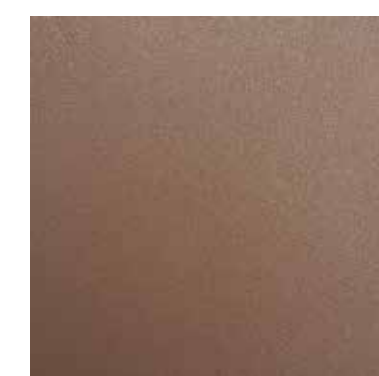
Argentina



Frappè



Biscuit



Ardesia



Mouton



Elephant

# Available colours range



Sandalo



Saddle



Golden glow



Tan



Passito



Peanut



Cappuccino



Africa



Amarena



Wood



Dark brown



Grigio



Glacier



Egret



Blaster



Minimal grey



Caribou



Slate



Ebony



Black

# Nausica

**Application:** Leather goods, smart devices, footwear

**Thickness:** 1.0 - 1.2 mm

**Leather size:** Half

**Colors :** 70 colors available

**Typology:** Pigmented, corrected grain, through dyeing aniline

**Tanning:** Chromium salts

**Features:** Emotional leather

